

Historic, Archive Document

Do not assume content reflects current scientific knowledge, policies, or practices.



62.23

GARDEN FOR VICTORY

1891
52

1943
Years

From ALPHA NURSERY • ALPHA, ILLINOIS
H. G. and H. F. WIRT, Owners
ON HIGHWAY U. S. 150

Ind.



Return Postage Guaranteed

LIBRARY
MAR 30 1943
U. S. Department of Agriculture

U. S. DEPARTMENT OF AGRICULTURE,

WASHINGTON, D. C.

BUREAU OF PLANT INDUSTRY
Fruit and Vegetable Crops and Diseases
8-3591

SMALL FRUITS

PLANTED THIS SPRING WILL BEAR NEXT YEAR

ALL SMALL FRUIT ON THIS PAGE CAN BE SHIPPED BY PARCEL POST

For Home — STRAWBERRIES — For Market

Our Strawberry plants are grown on rich black soil, which guarantees good, long, strong roots. Plant Strawberries in the spring for next season crop. Fall planting very uncertain.

Extra Early Variety

PREMIER—An extra early variety, heavy bearer. Berries are long and slim, good early market or home berry. About 10 days ahead of Dunlap.

25 plants 35c; 50 plants 60c; 100 plants \$1.00; 500 plants \$4.50; 1,000 plants \$7.00

Late Variety

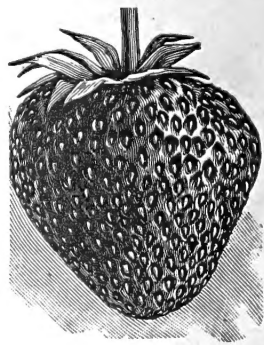
AROMA—One of the best late kinds; large fruit, bearing after other kinds are gone.

25 plants 40c; 50 plants 75c; 100 plants \$1.25

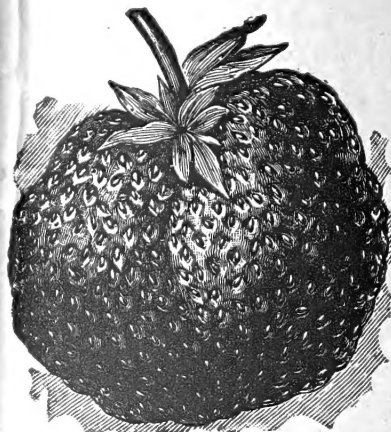
Early Variety

SENATOR DUNLAP—This is the best known variety in the United States. It bears well in all localities, producing big crops and big berries; very hardy; rich dark red color. Good plant producer, making wide heavy rows.

25 plants 35c; 50 plants 60c; 100 plants \$1.00; 500 plants \$4.50; 1,000 plants \$7.00



Dunlap



Mastodon

Everbearing Strawberry

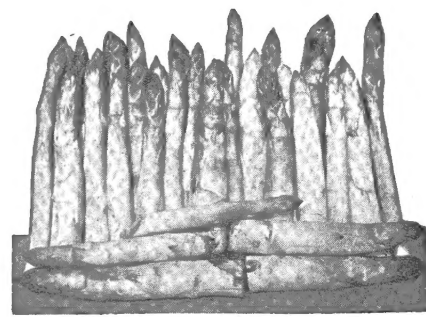
MASTODON—The elephant of strawberries, and bears lots of big berries from summer until frost. Plants set in April had ripe berries July 11th, and the first week in August 160 quarts every five days per acre, and in September 576 quarts per acre every five days. The late berries sure bring the price. This is the newest and best everbearer on the market today. Try a few of the plants. Supply limited. Order Early.

12 plants, 35c; 25 plants, 60c
50 plants, \$1.00; 100 plants, \$1.75

PLANT SMALL FRUITS NOW

Small fruits planted this spring will bear next spring. Save on the cost of your fruit, **GROW YOUR OWN**. Get them started now.

Postage on Strawberries—8c on 25; 12c on 50; 15c on 100; 35c on 500



Washington Asparagus

ASPARAGUS

2 Year Roots

NEW PARADISE—This is a new variety of Asparagus and rated as one of the best. A tremendous grower, yielding two or three times as much as other kinds. Exceptionally large, of finest flavor and rust proof. Produces big, tender, delicious tips for many weeks.

60c for 12; \$1.00 for 25; \$1.60 for 50

MARY WASHINGTON—One of the best old stand-by varieties; makes a heavy growth, large, tender tips; can be cut early and runs a long season.

35c per 12; 60c per 25; \$1.00 per 50; \$1.90 per 100
Postage—8c for 12; 12c for 25; 20c for 50; 25c for 100

RASPBERRIES

Raspberries should be planted early—last of March and to May 1st.

STATE VARIETIES WANTED

Variety	12 plants	25 plants	50 plants	100 plants
Cumberland.....	75c	\$1.40	\$2.50	\$4.00
New Logan.....	75c	1.40	2.50	4.00
Latham (Red).....	75c	1.40	2.50	4.00
Columbia (Purple).....	1.00	1.75	3.00	5.00
Sodus.....	1.00	1.75	3.00	5.00
Indian Summer.....	1.00	1.75	3.00	5.00

CUMBERLAND—One of the largest black raspberries known; its immense size, firmness and great productiveness entitles it to first consideration. Unusually strong grower, throwing up stout, stock canes; perfectly hardy. The most valuable, profitable raspberry grown for home or market use. Fruits for long season.

NEW LOGAN—An early Black-cap ripening a full week ahead of Cumberland. The fruit is of high quality and full size; free from crumbling. The color is deep, glossy, purplish black. The Logan is highly resistant to drouth, cold weather and disease. The canes are extra large and strong. Try a few of this new Raspberry.

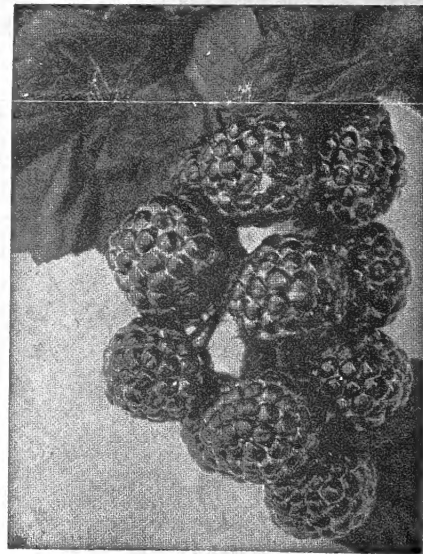
LATHAM—This is one of the leading varieties of the Reds. The fruit is large and solid, does not mush or break apart. The plants are almost disease-proof. Try a few of this variety, you will like them. A coming new red variety.

PURPLE COLUMBIA—Deep purplish red, highly flavored, extra strong canes, wonderfully productive; berries very large. There is nothing finer grown in the line of fruit than this variety for table use, canning, etc. This variety does not sprout.

SODUS—Purple—A very attractive large berry; firm and good quality, heavy yielding, drouth resistant, does not sprout. 12 plants, \$1.00; 25 plants, \$1.75.

INDIAN SUMMER—This is fast becoming one of the most popular of red raspberries; heavy bearer; fruit very large and solid. This variety has two crops a year—July and September; it is not an everbearer—it bears the fall crop of the new canes that grow up during the summer. It has stood our winters the best of any of the reds.

Parcel Post—10c on 12; 15c on 25; 20c on 50; 25c on 100



Cumberland

The Alpha Nursery has been growing fine nursery stock for 52 years, and we are proud of our record. The year 1943 finds us still living up to that enviable record. It is safe to order your wants by parcel post.

RHUBARB

2 Year Size

NEW STRAWBERRY—An improved old time variety of Pie Plant, stock of medium size, very bright red, juicy, and of fine quality. 3 for 25c; 12 for \$1.00.

RUBY RED—This is a new Red Rhubarb. It is grown from divisions, not from seed. It takes three years to develop a saleable plant. Here is something new and special in Rhubarb. 25c each; 3 for 70c.

Postage—8c for 3; 15c for 12

BLACKBERRIES

ELDORADO—Very productive and hardy; extra fine quality; sweet flavor, without core; fruit very large, jet black. We think this is the best of blackberries.

12 plants, 75c; 25 plants, \$1.40; 100 plants, \$4.50

Postage—8c for 12; 12c for 25; 30c for 100

BOYSENBERRIES

BOYSENBERRY—Tremendous size, often 2 in. long—heavy fruiting—has thorns. Should be put on trellis. 12 plants \$1.25; 25 plants \$2.00.

THORNLESS BOYSENBERRY—Canes smooth as velvet—early ripening—heavy bearer of large, black berries. 25c each; 3 plants, 70c; 6 for \$1.25; 12 for \$2.00.

HORSERADISH

BOHEMIAN—Much earlier than common kinds—roots are large and whiter, ready for market first year. 60c for 12; \$1.00 for 25 — good roots.

SAGE

HOLT'S MAMMOTH SAGE—Plants of strong growth, strong flavor. 1 Yr. Plants. 25c each; 3 for 70c; 6 for \$1.25

GOOSEBERRIES

2 Year Plants

POORMAN—The fruit is the largest of any of the American Gooseberries, the berries good red color, and are splendid eaten out of the hand. A strong, healthy grower. 40c each; 3 for \$1.00.

DOWNING—A large green fruiting kind; an immense cropper, always in demand. 30c each; 3 for 80c; 6 for \$1.50

CHAMPION—Fruit medium size, round. Bush very hardy and very productive; free from mildew. We think this is the best for general planting. 30c each; 3 for 80c; 6 for \$1.50



Champion Gooseberry

CURRANTS

2 Year Plants

RED LAKE—Finest of all red Currants; large berries; excellent quality; long, well filled clusters of cherry-red fruit. 40c each; 3 for \$1.00; 6 for \$1.80.

FAYS PROLIFIC—A hardy and popular red variety. Easy to pick and of excellent quality. Season early.

25 each; 3 for 70c; 10 or more \$2.20

Spring is the time to plant berry plants, fruit trees, roses and evergreens. Small fruit planted this spring will bear next year. This is the chance to have your own fruit next year. Get your order in now and be safe

2 year GRAPE VINES

CONCORD—Black, the most popular grape in America; bunches and berries large, healthy and productive. 15c each; 3 for 40c; 10 for \$1.30; 100 for \$10.00.

MOORE'S EARLY—Black, bunches medium size and very compact; berries large and of excellent quality; ripens ten days before Concord which makes it very desirable for market; very hardy, well suited for the North; one of the best. 25c each; 3 for 70c; 10 for \$2.00.

NIAGARA—A fine white grape. Produces large, compact, perfect bunches. Vine a strong, hardy grower. 25c each; 3 for 70c; 10 for \$2.00.

BRIGHTON—Bunches of good size, fruit when ripe is copper color with a sweet rich flavor; fine grape. 25c each; 3 for 70c; 10 for \$2.00.

FRUIT TREES

All Our Fruit Trees Are Grown In Our Nursery at Alpha, Ill.

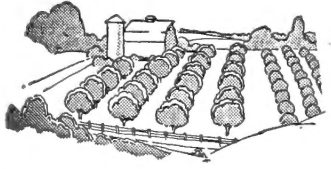
They are all hand sorted to insure good straight trees, with well shaped tops and good roots.
All the varieties are adapted to this climate, as they are grown in this climate.

3 Year, 4 to 6 Ft. Trees, 75c Each
3 for \$2.00; 10 for \$6.00

APPLE TREES

[EXPRESS OR TRUCK ONLY]

4 Year Trees, 5 to 7 Ft.
\$1.00 Each



SUMMER VARIETIES

EARLY HARVEST—Medium, to large, roundish, bright straw color; flesh white, good quality. July.
RED JUNE—Medium, oblong, hardy, and productive; deep red color; flesh white, tender, rich and sub-acid. August.

YELLOW TRANSPARENT—Medium, yellow, good quality, productive, early bearer. July. (also 6 to 7 ft. 3 yr. trees \$1.00 ea.)

BENONIA—Tree upright, rapid grower. Color, dark red with yellow blush; flesh creamy color; flavor unlike any other apple. Fine eating or cooking. This is about the last of the summer apples

AUTUMN VARIETIES

DUCHESS OF OLDENBURG—Large size, roundish, streaked with red and yellow; flesh white, juicy, acid. September.

FAMUESE (Snow)—Medium, deep crimson, flesh snowy white, tender. Tree slow crooked grower. October and November.

WEALTHY—Large, roundish, smooth, nearly covered with dark red; flesh white, fine, juicy, sub-acid; quality very good; good grower and productive. October.

ANOKA—A really good apple. Bears in two and three years. Fruit large and very much like Wealthy, ripening in late September to October. Very hardy and vigorous grower, very productive.

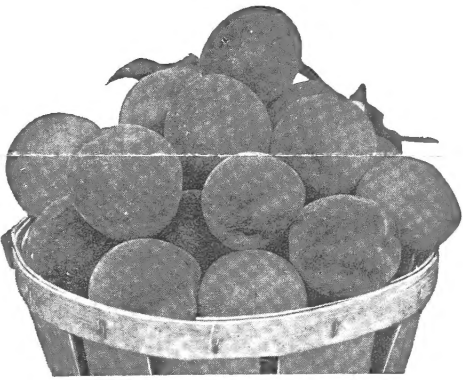
RED McINTOSH—Medium to large; red with purple blush flesh. Very white, fine quality. September, October.

2 year--4 ft. CRAB APPLES 75c each

RED SIBERIAN—Grows in clusters and the tree is simply loaded when fruiting. Bears very young; fruits in September. Use these for jelly and pickles. This is the little red one.

PEACH TREES

2 Year Trees—4 to 5 Ft., 50c each; 5 or more, 45c



Peaches

Peach Trees can be sent by Parcel Post. The postage is 10c for 1 tree and 3c for each additional tree.

POLLY—Very hardy; large; free stone; flesh white. September 5th.

VALIANT—Improved Elberta; highly colored; better quality; 2 weeks earlier.

PIONEER—Large oval; white flesh; ripens in early August.

ELBERTA—The great American market peach; produces big, profitable crops. Fruit large, bright, attractive, yellow with crimson shading; flesh firm and of good quality. Will ripen perfectly when picked green. One of the best for home or market use. Free stone. September.

CHAMPION—Fruit large, delicious, sweet, juicy; skin creamy white, with red cheek; handsome, hardy and productive, and a good shipper; adhering slightly to the stone. White flesh. August 15th.

SOUTH HAVEN—One of the newer peaches grown much in Michigan. It stands our cold winters better than any of the other varieties. Flesh golden yellow; rich and sweet; firm, excellent shipper and keeper; freestone; ripens 2 to 3 weeks ahead of the Elberta. Tree is hardy, healthy and is a vigorous grower and heavy producer.

HALE-HAVEN—This is a cross of the J. H. Hale and the South Haven, which develops a very large Peach of the Hale type and with the hardiness of the South Haven. We do not believe that Hale-Haven is quite as hardy as the South Haven; the fruit, however, is much larger. Try a few trees of this new variety.

ALEXANDER—White meat. Bears in July.

ROCHESTER—Large; rich yellow flesh; fine quality; free. Ripens late August.

CHERRY TREES

3 year trees—6 to 7 ft., \$1.00 each—3 or more trees 90c each.
2 year trees—4 to 6 ft., .80 each—3 or more trees 70c each.
1 year trees—3 ft., 50c each—3 or more trees 45c each.

1 year Cherry can go by Mail—10c for 1 tree, 3c for each additional tree.

EARLY RICHMOND—This is the early popular cherry that is planted so much. Medium red, hardy, immensely productive, ripens the last of June.

MONTMORENCY—The large, late, dark red cherry. This cherry has become very popular on account of size. It is very meaty—ripens about 10 days later than the Richmond.

SWEET CHERRIES

4 to 6 ft., \$1.00 each
(By Express or Truck Only)

BING—Black—very large and meaty.

SPANISH—Yellow—large and good flavor.

Sweet Cherries need well drained soil, heavy in limestone.

August Supreme NEW LATE SUMMER CHERRY

You now can have delicious sweet Cherries in AUGUST, when all other standard Cherries are gone. The tree is hardy, vigorous and productive. Starts to bear at an early age.

2 Yr. Trees—5-7 ft.—\$2.00 each. (Express only.)

WINTER VARIETIES

ALL RED DELICIOUS—Has the same size, flavor and shape as the common Delicious, but this variety is a deep bright red, which completely covers the apple. Flesh is very white, crisp and very juicy. Heavy bearer.

YELLOW DELICIOUS—Fruit golden yellow; flesh pure white; very crisp and juicy; very fine quality. Tree bears young with enormous crops. The old fruit growers claim this is the peak in apples.

JONATHAN—Medium, nearly covered with brilliant stripes of lively red; very showy, juicy, excellent; trees spreading and slender; bears early. November to February.

GRIMES GOLDEN—Medium golden yellow, with white dots, crisp, tender and juicy, excellent; tree vigorous, hardy and productive. November to January.

STAYMAN'S WINESAP—Fruit large, striped, nearly covered with red; flesh greenish yellow, very juicy and aromatic; very good; a strong, spreading grower; a good, early bearer; the best of our late winter apples. January to May.

TURLEY WINESAP—A large dark red apple of excellent quality. Tree is a vigorous grower and very productive; excellent eating apple and late keeper—January to May.

THREE NEW VARIETIES OF GOOD HARDY APPLES

4 to 6 ft., 2 yr. Trees \$1.00 each; 3 for \$2.75

CRIMSON BEAUTY—Mottled and striped red. Very early ripening.

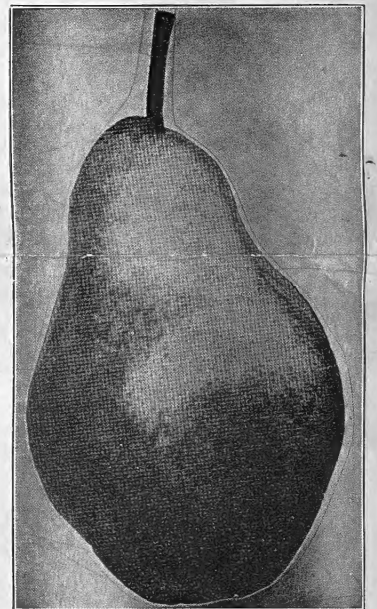
MILTON—Fruit pinkish red, white flesh; ripens Wealthy season.

PRAIRIE SPY—Medium size, bright red. Late and excellent keeper.

WHITNEY—Fruit very large, yellow striped with red; flesh yellow, very juicy and fine grained, flavor rich and almost sweet. August.

WE CAN SHIP DIRECT TO YOU

If you do not care to use gas to come to our Nursery, we can ship your order. Express or Truck shipments will be delivered to your home if you have city delivery. Parcel Post shipments will be delivered to your home. Trees under 5 feet tall can be sent by Parcel Post. All Berry plants can be sent by Parcel Post. Trees over 5 feet must be sent by Express or Truck. When an order contains an assortment of fruit trees and plants it is best and cheapest to go by Express or Truck.



Pears

PEAR TREES

	Each	3 Trees	5 Trees
3 year trees—5 to 6 ft.	80c	\$2.25	\$3.50

LINCOLN—Medium size, clear yellow flushed with red. Very hardy and very productive. Either canned or eaten fresh its flavor is delicious. Tree bears very young, and is a sure bearer from year to year.

BARTLETT—Large size, rich, yellow color, with a blush; very juicy and highly flavored; good to eat from the tree. This is the variety that is sold at fruit stands.

KEIFFER—The best late pear—does not ripen on the tree. Pick them before frost and lay them away. Heavy and sure bearer; good for canning. 7 to 8 ft., \$1.00.

DUCHESS—The largest of the eating pears, flesh white, very juicy, and excellent flavor. October. 7 to 8 ft., \$1.00.

SECKLE—The small, sweet pear. Surely fine to eat from the tree. The tree is a low grower, but very hardy. September.

DOUGLAS—Here is a BLIGHT-FREE PEAR—in which is combined the best qualities and habits of all leading varieties—with the drawbacks of none. It bears even more profusely than the Keiffer. It begins to bear at an earlier age than any other pear on earth. It ranks with the best in shape, size and coloring.

Pear Trees must go by Express or Truck—Too large for Mail.

HARDY APRICOTS

2 Yr. Trees—4 to 5 ft., 75c each
(Not Mailable)

MANDARIN—Large; rich yellow; fine quality.

SANSIN—Large; heavy crop; excellent quality.

COLBERT'S LATE—Large; egg shaped; fine flavor.

SUPERB—Small; round; very heavy bearing; good.

PEACH COT—Very large; rich yellow; fine quality; fast grower.

These Apricots are hardy northern varieties from Dakota and Idaho. The trees are all grown here in our Nursery.

PLUM TREES

2 Year—4 to 6 ft. Trees, 70c each
(Not Mailable)

GRAND DUKE—Very large; very dark red; very good flavor.

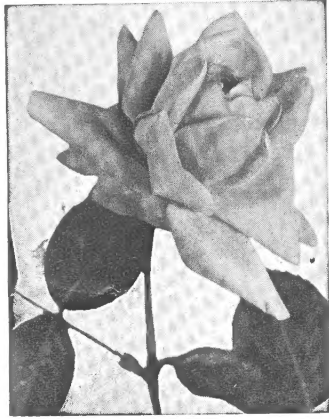
OMAHA—Very large; red; good flavor.

RED PRUNE—Medium size; good bearer; red; good flavor.

UNDERWOOD—Large size, skin greenish yellow with red, flesh golden yellow; juicy and sweet. Very hardy and productive bearer. One of the best.

EVERBLOOMING ROSES

10
for
\$5.00



Ami Quinard

60c each—2 yr. Top Grade

3 for \$1.60; 6 for \$3.30; 10 for \$5.00

Our Roses are all 2 years old, strong field Northern grown, and are equal to any roses on the market, and are not to be compared with cheap Southern grown stock. The following varieties are selected as best adapted for the climate, and the selection was made thru experience and trial.

Always ask for our free Rose Instruction Sheet

AMI QUINARD—Velvet crimson maroon (almost black). Large very double—vigorous grower.

GRUSS AN TEPLITZ (Crimson)—An extremely useful and dependable variety, succeeding well all over the United States. A profusion of beautiful, clear, crimson scarlet fragrant flowers, borne from June until frost. A vigorous and shapely plant.

PINK RADIANCE (Silvery Pink)—Vigorous upright bushy plants bear a continuous supply of very large, light silvery pink to salmon pink flowers on long, strong stems.

RED RADIANCE (Deep Red)—Vigorous, upright bushy plant, bearing a continuous supply of very large, beautiful deep red globular flowers.

E. G. HILL (E. G. Hill Co., 1929)—A new red rose of striking form and color. Long, perfectly formed buds opening to high centered, full double flowers of dazzling scarlet shading to deeper red as they develop. Free flowering, vigorous.

PRES. HOOVER (Creamy Yellow with Pink and Flame tints)—Long pointed buds. Very heavy bloomer. This was one of our best growers the past summer.

MRS. E. P. THOM—A bright lemon yellow. Long pointed buds, good bloomer, very fragrant. One of the newest roses.

K. VICTORIA—Pure white, slightly blushed at center. A fine bedding type.

MRS. SAM MCGREDY—Large, brilliant scarlet shaded rose pink.

GIPSY LASS—Well shaped, double blooms of dark scarlet crimson.

BETTY UPRICHARD—Salmon pink, stained with copper red.

JOANNA HILL—Large yellow with bronze shading in center—very fragrant; vigorous grower.

BRIARCLIFF—Handsome flowers of silvery rose pink.

MCGREDY'S YELLOW—An outstanding yellow rose; long pointed buds which open into perfect flowers. Very free blooming.

AMERICAN BEAUTY—Deep pink shaded soft carmine.

F. K. DRUSKHI—Very large, snow white, free bloomer.

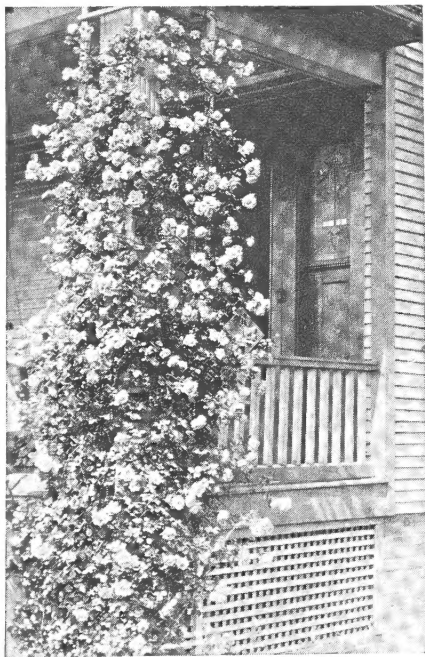
FLORIBUNDA ROSES

The Floribunda group of Roses represents a new class of Roses, especially bred for hardiness, ease of culture and mass color effects. They are disease resistant, bloom continuously in large clusters. These roses only grow to a medium height, about two to three feet when matured. They are a very hardy, heavy blooming cluster type group. 2 year No. 1 plants 50c each; 3 or more plants 45c each

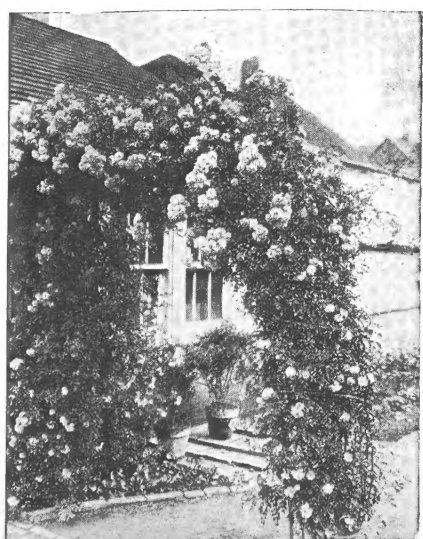
GOLDEN SALMON SUPERIOR—Golden Salmon blooms, very heavy clusters of small double blooms. Very showy, colorful variety.

MRS. R. M. FINCH—Beautiful Shell Pink. Large double blooms in clusters; very hardy.

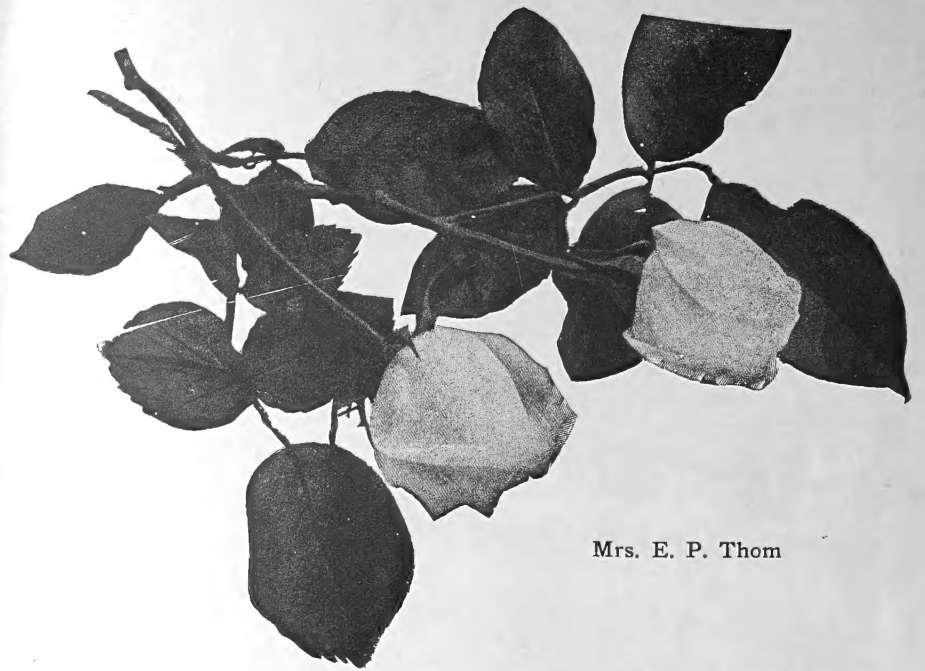
EDITH CAVELL—Dark red roses in clusters; hardy and very heavy bloomers.



Pink Dorothy Perkins



Climbing American Beauty



Mrs. E. P. Thom

HOW TO GROW ROSES

Roses need plenty of sun and good rich soil. We have found that they do better if planted in beds. The rose bed should be top dressed with 2 to 3 inches of cattle or sheep manure, and add a cup full of bone meal to each plant then spade under the whole works to a depth of 10 to 12 inches, then set the roses. Plant 12 to 18 inches apart and 3 to 5 inches deeper than they grew in the nursery.

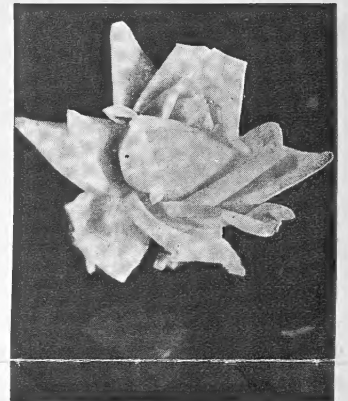
Roses need to be sprayed often and regularly every 10 days with BLACK LEAF 40. Use 1 oz. to 5 gallons water and add 1/2 pound BORDEAUX MIXTURE. This spray will control bugs and leaf spot.

Keep the rose bed well cultivated. Also keep all the old bloom picked off.

Late in the fall after the leaves are off the EVERBLOOMING ROSES (only) should be cut back to within 6 to 8 inches of the ground and covered with soil. Mound the soil up as high as possible. In the early spring remove the mound of soil and give the bed a good top dressing of manure.



Gruss an Teplitz



Joanna Hill

PLANT ROSES EARLY



Roses planted during the month of April do much better, and should bloom within 60 days from time of planting.

WE CAN SHIP ROSES
DIRECT TO YOU

Parcel Post Rates

1 plant 10c
3 plants 15c
6 plants 20c
10 plants 25c

Our Roses are Extra Select
The Best Grade That
Money Can Buy

2 year CLIMBING ROSES 50c ea.

3 plants \$1.25; 5 for \$2.00

PAUL'S SCARLET (Orange Scarlet)—The popular new shade. A vigorous climber, on single stems. Our best climber.

DOROTHY PERKINS' PINK—Medium size rose, very hardy; plant makes heavy foliage, excellent for trellis or fences.

EXCELSA (Blood Red)—The popular cluster roses, and very vigorous growers; wonderful bloomer.

CLIMBING AMERICAN BEAUTY—Flowers rich red to crimson, very large; excellent for cutting.

GROOTENDORST

The freest blooming variety in the Eskimo Beauty family. It is a strong grower reaching a height of 4 to 5 feet. Blooms in clusters all season long. The individual flower resembles a small red carnation. An excellent plant for shrubbery planting and for rose hedges.

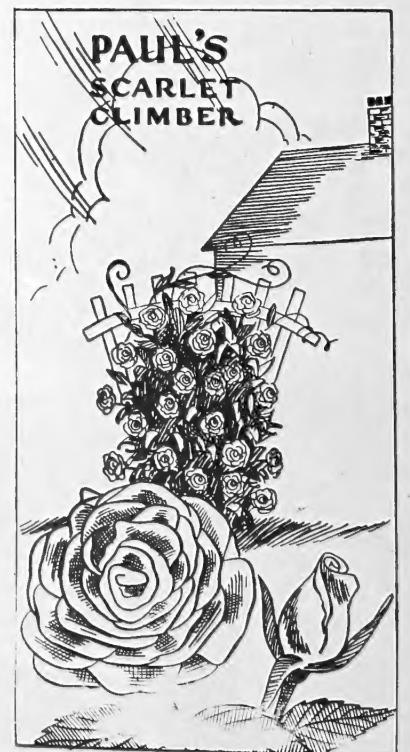
2 year Plants, 50c each; 5 or more, 40 each

CHOICE DAHLIAS

CALIFORNIA IDOL—Clear bright yellow, immense size.....	50c each
FOREST FIRE—Brilliant scarlet flame with yellow.....	50c each
DWIGHT MORROW—Large, gigantic red; admired by everyone.....	50c each
MARRY ELLEN—A clean cut flower of burnish pink.....	50c each
MAMMOTH CHAMPION—Brilliant orange flame color.....	25c each
ORIENTAL GLORY—Orange overlaid with scarlet.....	25c each
JEAN KERR—An ideal pure white dahlia.....	25c each
JERSEY'S BEAUTY—A beautiful large pink.....	25c each
SATAN—One of the largest. Bright red with yellow.....	35c each
LITTLE DAVID—Pompon dahlia. Tangerine orange.....	25c each
BOBBY—Pompon. Delicate plum shade.....	25c each
JOE FETTE—Pompon. One of the best pure white.....	25c each

The last three Dahlias listed Pompons are small flowers about 1 to 1 1/2 in. across. All the other varieties are the large decorative type flowers, 5 to 10 in. across.

Most home owners will have a little more time to work around their home this year, as the family auto will have to save its shoes, so why not fix up the yard and garden. A few Flowers, Evergreens, Trees and Fruits will add to your home and you will find it a joy in getting things to grow. You also will get a profit from your work.



PAUL'S
SCARLET
CLIMBER

SHADE TREES

Air Condition Your Home!

Shade Trees Not Mailable

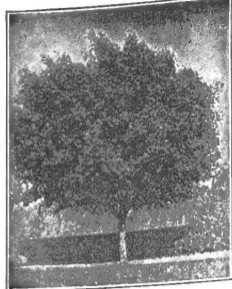
The Spreading Growth of SHADE TREES will Create Much Comfort for Your Home. Your property will increase in value by the pleasant surroundings.



CHINESE ELM

This new Elm is one of the most popular shade trees we have. Fast growing, free from disease; stands dry weather. Can be trimmed to any shape.

Chinese Elm	
12 to 14 ft. trees, 1 1/2-1 3/4 in.	\$5.00
10 to 12 ft. trees	3.00
8 to 10 ft. trees	2.00
7 to 8 ft. trees	1.00
5 to 6 ft. whips	.30
2-3 ft.	10 for 50c; 50 for \$2.00



MAPLES

Hard Maple

Slow growing but a tough, long lasting tree. 8-10 ft. trees \$3.50 each; 6 to 7 ft. trees \$2.00 each.

Hard Maple

Norway Maple

Very much like Hard Maple but a little faster growing. 8-10 ft. trees \$3.50 each

Schwedlers Maple

The red leaf Maple. 8 to 10 ft. trees \$4.00
6 to 8 ft. trees \$3.00

FLOWERING CRAB (Bechtel's)—The only genuine double flowered crab. Makes a medium sized tree; perfectly hardy, succeeds well in most soils. When in bloom appears to be covered with delicate pink, perfectly double small roses of delicious fragrance. 3 to 4 ft., \$1.50.

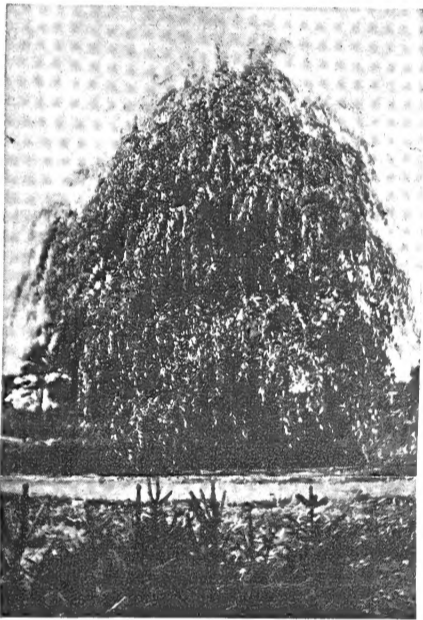
PURPLE LEAFED PLUMS—The Purple Plums are becoming very much in demand, as they are very showy with their purple foliage throughout the summer. The trees are small, compact in growth, and are suitable for the lawn or shrubbery border. A few of these trees placed about your home will add greatly to your planting. 4 to 6 ft. Trees, 75c each.

JUDAS TREE (Red Bud)—A small growing tree of irregular form, with heart-shaped leaves. It is covered with bright pink blossoms early in spring before the leaves appear; and is largely used in groups of shrubs and small trees to give color for this early season. 3-4 ft. Trees, 50c each.

ELM AM. WHITE—This is a splendid tree for street or lawn. It is fast growing and will give a lot of shade. 6 to 8 ft. Trees, \$1.00.

MOLINE ELM—This is a tall slim growing Elm, very much like our slim poplars only the Elm is much longer lived. Has very large dark green leaves. Grows 40 to 50 feet tall. 6 to 8 ft. Trees, \$1.50 each; 8 to 10 ft. Trees, \$3.50 each.

WHITE BIRCH—Medium growing tree, spreading, with white bark; very picturesque. 8 to 10 ft., \$3.50 each.



Wisconsin Willow

WILLOWS

WEEPING WISCONSIN WILLOW—A graceful weeping tree; long narrow leaves, green bark. 4-5 ft. trees, 50c each.

PUSSY WILLOW—A shrub-like tree; has furry catkins in early spring; fast growing. 3-4 ft. bush trees, 50c.

Come to the Nursery and select your own Shade Trees. You save money in this way; also you see just what you are buying.

VINES and CLEMATIS

Strong 2 year Plants

40c each; 3 for \$1.00. Postage 10c.

WISTERIA (Purple)—One of the finest climbers, of rapid growth, and perfectly hardy, with long, pendulous clusters of bluish purple. Flowers in June. Grafted plants sure to bloom. 50c each.

ENGLEMAN'S IVY—It is one of the finest ivies we have. The brilliant coloring of the leaves in autumn, together with perfect hardiness, makes it a valuable climber for covering brick or stone walls. Where hardiness is necessary, the Engleman will be found much superior to Boston ivy.

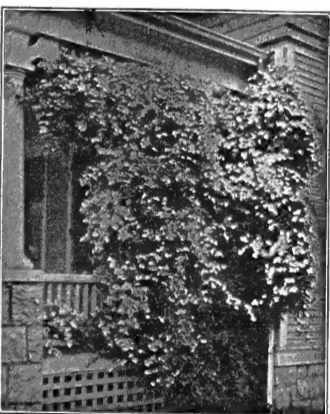
AMERICAN IVY—The well known native vine with five parted leaves, that change to rich crimson in autumn; berries blue black; very rapid grower and perfectly hardy.

BOSTON IVY—This is one of the finest hardy climbers we have for covering walls, as it clings firmly to the smoothest surface, covering closely with overlapping foliage, giving appearance of shingles. The color is a fresh deep green in summer, changing to the brightest shades of crimson and yellow in autumn.

HONEYSUCKLE (Scarlet Trumpet)—One of the handsomest in cultivation; coral flowers; very vigorous and hardy; blooming all summer.

BITTERSWEET—A native vine that is especially ornamental in fall and winter, with brilliant orange and scarlet fruit.

SILVER LACE VINE—A strong vigorous vine attaining a height of over 25 feet, it has all summer and fall a great mass of foamy sprays of white flowers which turn rose colored as they begin to fade, and the combination of the white and rose make a very pretty picture. 2 year plants, 50c each.



Paniculata

GOLDEN FLAME (Honeysuckle)—New ever-blooming Honeysuckle vine, blooms from early summer until frost. Red flame outside, yellow inside. 2 year plants, 50c each.

Clematis

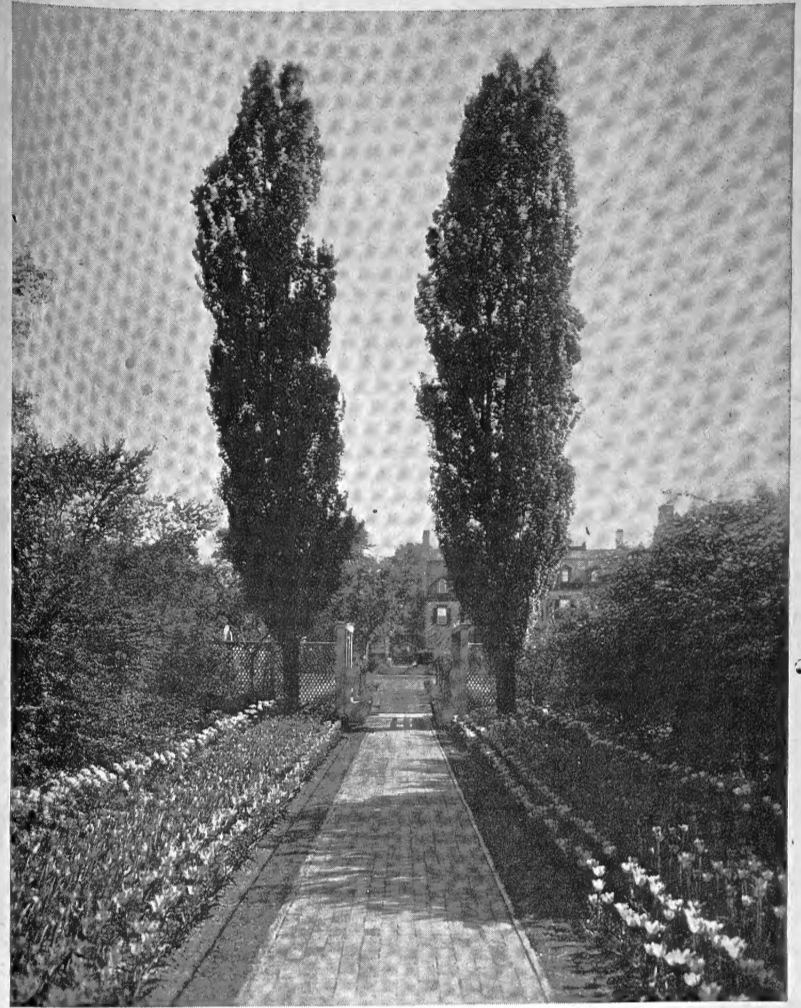
Postage 10c

I list here below two popular varieties of the large flowering Clematis and one of the small white flowering. Clematis need a little extra attention to get them started. Once started they grow for years.

JACKMANNI—The well-known purple flowering Clematis. Flowers 4 to 6 inches across. 2 year Field Grown Plants, \$1.00 each.

MME. EDW. ANDRE—A robust plant blooming freely. Violet red flower 3 to 4 inches across. 2 year Field Grown Plants, \$1.00 each.

PANICULATA—The small flowering sweet scented white clematis. One of the most vigorous and beautiful climbers. 3 year Field Grown Plants, 50c each.



Lombardy Poplar

LOMBARDY POPLAR (P. Fastigiata)—Attains a height of from fifty to one hundred feet; well known for its erect, rapid growth and tall spiry form; indispensable tree for landscape gardening, to break the monotony of most other trees. 4-5 ft. Whips, 25c each; 6-8 ft. Trees, 50c ea.; 8-10 ft. Trees, \$1.00 ea.

PIN OAK—One of the most popular of all the Oaks; fast growing, easily transplanted, red foliage in fall. 3-4 ft. Trees, 50c each; 5-6 ft. Trees, \$1.50 ea.; 8-10 ft. Trees, \$3.50 ea.

BLACK WALNUT—A tall spreading tree, very valuable for lumber. 3-4 ft. Trees, 50c each; 5 to 6 ft. Trees, \$1.50.

GREEN ASH—Medium size tree of thick pyramidal habit; splendid shade tree. 3-4 ft., 50c each; 6-8 ft., \$1.50

SILVER MAPLE—A fast growing tree; leaves silver under side. 8 to 10 ft., \$1.50; 10 to 12 ft., \$2.50; 12 to 14 ft., \$3.50

SYCAMORE—Large, handsome leaves; smooth, light colored bark; good, strong growing tree. 6 to 8 ft. trees, 90c

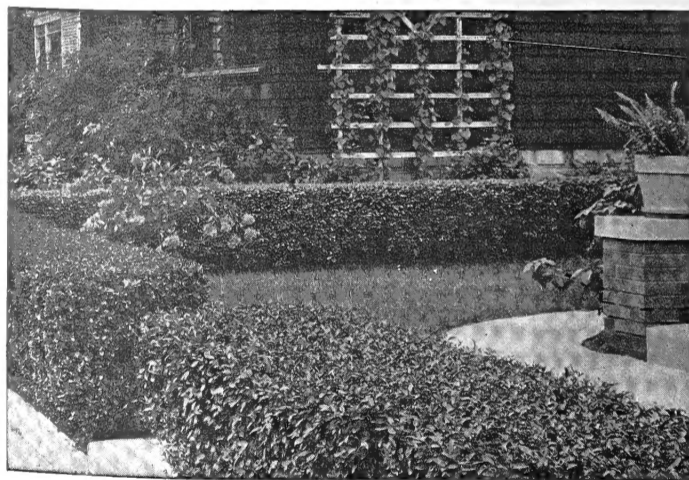
POPULAR BOLLEANA—A rapid growing columnar tree; silver foliage; green bark. 8 to 10 ft. trees, \$1.50

LINDEN—A dense-headed tree. Will stand heat and drought. Leaves silver beneath. 5 to 6 ft. trees, \$1.60

HACKBERRY—A valuable shade tree. Rapid growth; limbs seldom broken by wind. 6 to 8 ft. trees, \$1.50

PLANT A HEDGE...

Postage on Hedge Plants—12c per 12; 35c per 100



Amoor River Privet
Makes a Fine, Hardy Hedge

Special
12 to 18 in. Plants
\$1.00 per 12
\$7.00 per 100
2 to 3 ft. Plants
\$1.50 per 12
\$12.00 per 100

AMOOR RIVER PRIVET

This is the hardy type of privet so much used for hedges. Has glossy green foliage which hangs on very late in the fall. This variety of Privet can be trimmed at any time into any shape. Plant Amoor Privet no matter where you live, it will increase the value of your place.

BRIDAL WREATH (Spirea Van Houttei)

Grandest of Spireas, one of the best of shrubs; complete fountain of pure white bloom in May and June. The foliage and bush shape is ornamental the year round. Fine for tall hedge or screen. Also much used for foundation planting.

Special—18-24 in. Plants, \$1.50 per 12
2-3 ft., 25c each; 10 for \$1.80; 3-4 ft., 40c each; 3 for \$1.00

JAPANESE BARBERRY

The finest of all the Barberries, grown in compact form, spiny stems, foliage fine and dense, changing to brilliant red in fall, the clusters of red berries hanging on all winter. Much used for hedge and borders. Considered by many to be the most valuable foreign shrub grown. This Barberry is recommended by the Government. It does not have the wheat rust.

Special—12-18 in. Plants, \$1.00 per 12; \$7.00 per 100
3 yr., 18-24 in., 25c each; \$2.00 per 10

CHINESE ELM

The Chinese Elm is a very good fast growing tall hedge or screen plant. Very fast growing. Will stand hot weather. 5-6 ft. whips, 30c each. 2 to 3 ft. plants, 50c for 10 plants; \$2.00 for 50; \$3.50 per 100.

PERSIAN LILAC

This is a fast, early blooming lilac, which is very good for hedges and screens. Can be trimmed any time and any height. 12-18 in. plants 30c each; 3 to 4 ft., 75c.

PLANT EVERGREENS

For All Year Beauty

THE FOLLOWING EVERGREENS CAN BE SENT BY PARCEL POST

We have developed a new method of packing Evergreens so that they can be shipped by Parcel Post. The regular balled in burlap trees are too heavy to be shipped through the mails.

These trees are fresh dug from our fields with roots saved. They are then dipped into a sloppy mixture of black and clay soil which clings to the roots. They are then packed with wet Peat Moss, after which an outer coating of wet Sphagnum Moss is applied. They are then wrapped in water-proof paper. Evergreens treated with this method can be shipped several hundred miles and be out of the ground many days without drying out.

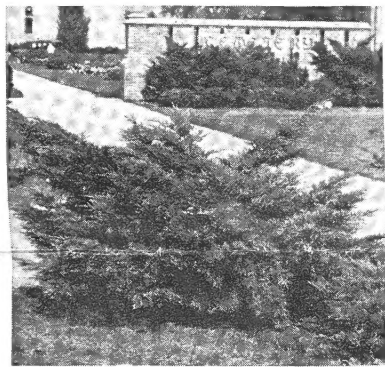
When these trees are received by the customer the outer paper wrapping should be taken off, leaving all the moss on the root system, and planted directly into the ground, moss and all; then give the tree plenty of water. They should be watered every day for 5 or 6 days, then the watering cut to once a week throughout the summer.

These trees are 6 to 8 years old and run from 12 to 36 inches tall, depending on the type and kind of tree.

\$2.00 each

POSTAGE 20c EACH

JUNIPER ANDORA—This juniper has proven a most satisfactory low growing tree. Its spread will reach 4 to 5 feet across and 18 to 20 inches high. It is a good thrifty grower. In the fall it turns a silver and finally, going into the winter, a bronzy red, but during the summer it is a vivid green. 15 to 18 in. size.



Pfitzer Juniper

JUNIPER PFITZER—This tree ranks as one of the most important evergreens of today. It thrives under many conditions. We have found that this evergreen will grow where all other kinds fail. It is spreading in growth and will attain a height of 4 to 5 feet if properly sheared and staked a little. 15 to 18 in. size.

VIRGINIA JUNIPER—This is one of the oldest and most popular evergreens. It is well adapted to our climate and will stand the smoke and gas of the city. A fast grower. With a little trimming it makes a perfect pyramidal tree. 2 to 3 ft. size.

JUNIPER SPINY GREEK—Grows in a rather broad base, tapering to a pointed terminal top; gray-green foliage. Grows to a height of 5 to 6 feet. 12 to 15 in. size.

COLORADO JUNIPER—This is a very refined upright growing evergreen, with fine bluish green foliage. Stands lots of dry hot weather. 24 to 30 in. size.

CHINESE JUNIPER—A fine upright evergreen with blue green foliage—a very hardy fast-growing tree, which stands our hot summers—out of the Pfitzer family. 2 to 3 ft. size.

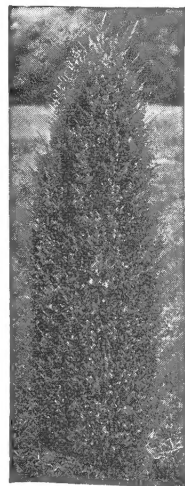
KETTELER'S JUNIPER—A fine upright open growing evergreen, with dark green, heavy foliage. It is well adapted for our climate—does not burn out. 2 to 3 ft. size.

CANNARTI JUNIPER—An upright grower, with very dark green foliage; holds its color all year. Has blue berries, which hang on all winter. Grows 6 to 8 feet. (2 to 3 ft. size.)

MASCULA JUNIPER—An upright pyramidal type tree with dark foliage, interwoven with silver foliage. This tree has two distinct types of foliage. A very hardy evergreen. Grows 6 to 8 ft. (2-3 ft. size.)

ARBOR VITAE PYRAMIDAL—This is a slim pyramidal tree, growing 8 to 10 feet tall. Flat, light green in color. (15 to 18 inch size.)

BLACK HILLS SPRUCE—One of the best and most popular of Spruce. A compact symmetrical upright grower. Slow growing, very hardy, withstanding heat, drouth and cold. (18 to 24 in. size.)



Colorado Juniper

\$1.00 each 6 Trees for \$5.00

Postage 10c

One of Each—Postage 30c

The following Evergreens are 5 to 6 years old and run from 12 to 24 inches tall. They are bare roots packed in wet Peat and Sphagnum Moss, which insures arrival in good moist condition. When planted they should be well soaked with water every day for the first week—then once a week all summer.

PFITZER JUNIPER—A medium low spreading kind, dark green foliage. One of the best low foundation trees. Will grow anywhere with a little care. 12-15 in. size.

VIRGINIA JUNIPER—An upright pyramidal tree; rapid in growth; hardy—can be sheared into any shape. 18-24 in. size.

BLACK HILLS SPRUCE—A wide spreading upright tree; dark green foliage of the Xmas tree type. Needs lots of water first year. 18 to 24 in. size.

COLORADO JUNIPER—A slim pyramidal tree with silver foliage. Stands dry weather well. 18 to 24 in. size.

COLORADO SPRUCE—This spruce has a silver foliage—needles very heavy. Big, heavy grower. This is not the true blue spruce, but a very close resemblance. 18 to 24 in. size.

AUSTRIAN PINE—This is the long needle pine. Grows in a tight, compact tree—best for background planting. 18 to 24 in. size.

EVERGREENS ARE NOT HARD TO GROW. All they need is a little reasonable care—and most of this care is water and a little cultivation. Water is very important, as 70 per cent of evergreens that die is from lack of WATER. One good watering, once a week, is much better than watering every day, and when you water put 10 to 15 gallons of water to each tree—but don't wet the tops.

ALL OUR EVERGREENS ARE GROWN AT THE NURSERY IN ALPHA. They are all fresh dug from our fields. This is very important, as evergreens dry out fast, and if they are out of the ground very long, they will be a sure loss.

IT WILL PAY YOU TO BUY EVERGREENS FROM THE GROWER.

The following Evergreens are all balled in burlap. It is best that you call at our Nursery, select your Evergreens, and take them with you, as these sizes are hard to ship. However, we can ship them by Dohrn or Burlington Truck. These trees have to be boxed or packed separately in baskets.

LOW OR SPREADING TYPE EVERGREENS

PFITZER JUNIPER—This is one of the most popular spreading type evergreens; very hardy, will grow in almost any soil and in any condition. Blueish-green in color, soft heavy foliage. Grows 3 to 4 ft. tall and with a 5 to 6 ft. spread. 15 to 18 in., \$2.50; 18 to 24 in., \$3.00; 2 to 3 ft., \$4.00; 4 to 5 ft. size, \$7.00 each

ANDORA JUNIPER—A most satisfactory low spreading type. In fall it turns silver with bronzy-red undercast, changing to bright green during summer. Grows 20 in. tall and 4 to 5 ft. spread. 18 to 24 in., \$2.50; 2 to 3 ft., \$3.50

PROCUMBUS JUNIPER—A very low spreading type, about 14 to 16 in. tall and 3 to 4 ft. spread. Blueish-green foliage. 18 to 24 in., \$2.50; 3 to 4 ft., \$3.50

GOLDEN JUNIPER—One of the new evergreens with golden yellow colored foliage, changing to an old gold color in fall. 18 to 24 in., \$2.50; 2 to 3 ft., \$4.00



Virginia Juniper

TALL PYRAMIDAL AND UPRIGHT EVERGREENS

VIRGINIA JUNIPER—One of our old native type evergreens well adapted to our climate; a strong, upright grower, can be sheared into any shape. Dark green in summer, changing to plum color in fall. 3 to 3½ ft., \$2.50; 5 to 6 ft., \$7.00.

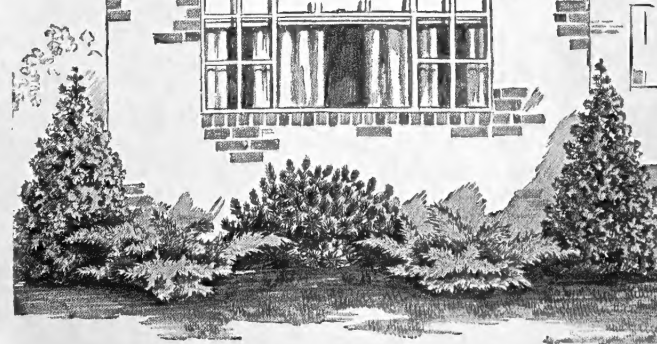
COLORADO JUNIPER—A refined upright type, bluish-green foliage; stands hot dry weather. 24 to 30 in., \$2.50; 5 to 6 ft., \$7.00; 4 to 5 ft., \$5.00.

CANNARTI JUNIPER—An upright type with vivid green foliage; holds its color all year. Has blue berries in winter. A good hardy evergreen. 2 to 3 ft., \$2.50; 3 to 3½ ft., \$4.00; 4 to 4½ ft., \$5.00.

CHINESE JUNIPER—A fine upright evergreen with blue-green foliage. A very hardy, fast growing tree. Stands shearing well; in fact should be sheared. 3 to 4 ft., \$3.00.

MASCULA JUNIPER—An extra hardy type with two types of foliage, dark green and bluish-green. Good grower and well adapted to our climate. 2 to 3 ft., \$2.50; 3 to 3½ ft., \$4.00.

GLAUCA (BLUE) JUNIPER—A grafted type, with blue foliage. A good grower, should be trimmed to keep in shape. 2 to 3 ft., \$3.00; 3 to 3½ ft., \$5.00.



ARBOR VITAE PYRAMIDAL—This is a slim, upright tree. Grows 8 to 10 ft. tall. Has flat, light green foliage. 36 to 40 in., \$3.00 each.

YEW—An upright spreading type, growing in a fan shape. Very dark green; best in shady places and north plantings. 18 to 24 in., \$3.00; 2 to 3 ft., \$4.00.

HEMLOCK—Grows upright, but the branches are long, with weeping effect; very dark green. Does best in damp, shady places. Heavy 4 to 4½ ft., \$4.00.

SPRUCE AND FIR

BLACK HILLS SPRUCE—A most popular Spruce, dark green color. A compact, symmetrical, upright grower; very hardy, but needs lots of water. 12 to 15 in., \$1.50; 18 to 24 in., \$2.50; 24 to 30 in., \$3.50.

NORWAY SPRUCE—The hardy northern Spruce, much used for Xmas trees. 18 to 24 in., \$2.00; 24 to 30 in., \$3.00.

DOUGLAS FIR—A fast growing tree with foliage much like spruce—needles longer and softer. 12 to 18 in., \$2.00; 18 to 24 in., \$3.50; 4 to 4½ ft., \$5.00.

COLORADO BLUE SPRUCE—This is one of the Blue Spruces, but of the seedling type. Heavy bluish foliage. 12 to 18 in., \$3.00.

MOREHEIM BLUE SPRUCE—This is the genuine grafted Blue Spruce—bright blue foliage. 12 to 15 in., \$4.00.

Be sure to read the suggestions above concerning watering of Evergreens. This is essential to their growth.



Colorado Blue Spruce

HARDY SHRUBS

Shrubs make a quick and inexpensive planting, and with proper selection will bloom all summer. Our shrubs are grown in our Nursery at Alpha and are fresh dug from rich, black soil



Pink Spirea

Eight Hardy Low-Growing SHRUBS

50c ea. 3 for \$1.35 5 for \$2.00

These shrubs are all low growing. They grow from 3 to 4 feet tall. They are excellent varieties for foundation planting or where low shrubs are needed. The plants are all strong 2 year.

- SPIREA FROBELLI**—Pink Spirea. Grows 3 to 3½ feet, large flat pink bloom in May and June, also blooming a little later in summer.
- SPIREA ANTHONY WATERER**—Pink Spirea. Grows 2½ to 3 feet, flowers dark pink, bloom all summer.
- SPIREA THUMBERGI**—This Spirea blooms in April, with small white flowers which just cover the shrub. Grows 3 to 4 feet tall.
- JAPAN QUINCE**—This is the popular flowering Quince, the crimson blooms come out before the leaves appear. Foliage very dark glossy green. Grows 3 to 4 feet.
- DWARF NINEBARK**—This shrub is a very dense grower, white flowers in May and June followed by red pods. This shrub is especially good for foundation or hedges. Grows 3 to 4 feet.
- DEUTZIA (Pride of Rochester)**—Has large trusses of white flowers in June, heavy thick foliage. Grows 3 to 4 feet.
- RED BARBERRY**—This Barberry is very attractive, when planted with other shrubs, on account of its bronze red foliage all summer. It dresses up your planting; can be used as hedges or single plants; it also can be trimmed into any shape. Grows 3 to 3½ feet. 2 to 3 ft. Plant, 3 yr., 75c each.
- ALMONDS PINK**—This is the shrub that blooms early in May with small pink rose-like flowers.



Flowering Almond



Deutzia

We can ship 2 year Shrubs by Parcel Post. Shrubs marked NOT MAIL-ABLE will have to go by EXPRESS.

PARCEL POST RATES ON SHRUBS

10c each
15c for 3 plants
25c for 5 plants
35c for 10 plants

FRENCH LILAC

3 ft. Plants

85c each 3 for \$2.25



The following are some of the best varieties of the French Lilacs. They are more dwarf than the common varieties; the blooms are larger and of better color, they also bloom much younger. These Lilacs are grafted on Privet or Ash and do not sprout. They should be planted 3 or 4 inches deeper than they grew in the Nursery. Every home should have a few of these Lilacs.

CHAS. JOLLEY—Double purple, with large heads of flowers.

BERTHA DANNERON—Single white, with unusually large open clusters.

LUDWIG SPAETH—Single—Deep maroon red, large well filled clusters. A little more dwarf than others.

BERREGER—Single—Light purple, large well filled clusters.

COMMON LILAC

LILAC (Common Purple)—Grows 6 to 8 feet. Lavender purple flowers. This is the old fashioned purple lilac with the sweet scented flowers in May. 2 to 3 ft. plants, 35c each.

We can furnish 7 to 8 ft. blooming size in Purple Lilac for \$1.00 each

PERSIAN LILAC—Upright vigorous grower, reddish purple flowers in April and May. This Lilac blooms very young, and is very hardy; stands dry weather; much used for hedges or tall screens. 3 to 4 ft. plants 75c each; 12-18 in. plants 30c each.

BUTTERFLY BUSH

BUTTERFLY BUSH (Common) Summer Lilac—Makes a bush 3 to 4 feet tall, but freezes to the ground during winter. The bush is just covered with long racemes of Lilac-like flowers. Blooms in July and August. Very attractive. 2 yr. plants 30c each.

NEW ILE DE FRANCE BUTTERFLY BUSH—This is a new variety, flowers much darker in color—almost dark red. 2 year plants, 50c each.

TWO COLORFUL AND UNUSUAL SHRUBS

2 to 3 foot plants, 3 year, 75c each; 2 for \$1.40

WAHOO—Native, very hardy, vigorous shrub, producing abundance of scarlet berries much like bittersweet and may be cut in fall. Foliage brilliant in autumn; grows 6 to 8 feet.

ALATUS—Yellow flowers in May-June. The limbs have square binged corky bark, leaves brilliant scarlet in fall. Very unusual plant, and very hardy. Grows 5 to 8 feet.

PLANTING AND CARE OF SHRUBS

The planting of shrubs is quite simple. All that is necessary is to have the hole of sufficient size so the roots will not be crowded. Set the plant 2 to 3 inches deeper than it grew in the nursery, then fill the hole one-half full soil and put on one or two buckets water. When the water settles fill up the hole with soil.

Trimming shrubs, the following rule will apply. Shrubs that bloom before July 1st should be trimmed after they bloom. Shrubs blooming after July 1st should be trimmed early in the spring or late fall before frost.

The best Spray for shrubbery is BLACK LEAF 40. 1 oz. will make 6 gallons of spray. This is for bugs and aphids. Spray anytime when you see the bugs.

Ten Hardy Medium-Growing SHRUBS

50c ea. 3 for \$1.35 5 for \$2.00

These shrubs are all of medium height. They grow from 4 to 6 feet and are suitable for foundation and shrubbery borders. The plants are all strong 2 year old.

GOLDEN BELL (Forsythia)—This shrub has yellow bell shaped flowers early in the spring before the leaves appear.

CALYCANTHUS—A fragrant shrub with chocolate colored flowers and heavy dark green leaves. A good upright grower.

SPIREA VAN HOUTEI—This is the much planted Bridal Wreath. White flowers in early June.

SYRINGA LEMONINE—This is a medium growing Syringa, white flowers in May. A good thick bushy shrub.

WEIGELIA RED—Deep green foliage. Crimson flowers in June.

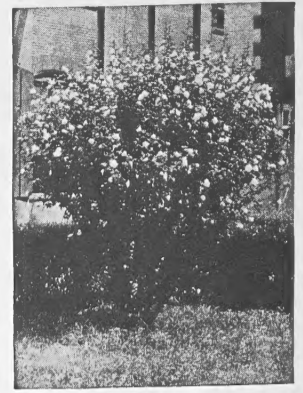
HYDRANGIA P. G.—This shrub has large cone shape blooms which come out white and turn pink in the fall. We have 3 to 3½ ft. plants at 60c each.

BEAUTY BUSH—This is a new shrub, very hardy. The blooms are pinkish white and appear in June. This shrub attracted wide attention last summer. 50c each.

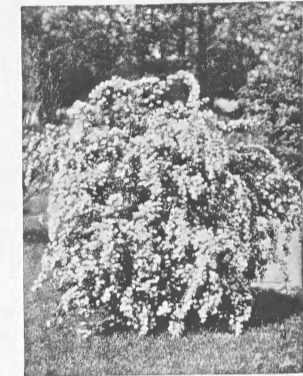
ALTHEA (Rose of Sharon)—This shrub is an upright grower; blooms in late summer, large single blue flowers.

WINTERBERRY (Aronia)—This is a very unusual and showy shrub, white flowers tinged with red in late May, followed by large black berries which hang on late into the fall and winter. Grows 3 to 3½ feet.

FLOWERING CURRANT—A compact, bushy shrub with yellow fragrant flowers in June, highly colored foliage in the fall after frost. Grows 3 to 4 feet.



Althea



Spirea Van Houtei



Hydrangea—P. G.

MAGNOLIA

SOULANGEANA—The most decorative of all the Magnolias. Produces a wealth of very large rose colored blooms just before the leaves in spring. The plants are on their own roots and are not to be compared with tender grafted kinds.

2 to 3 ft. B&B, \$5.00 each

4 to 5 ft. B&B full bloom buds, \$7.50

Not Mailable

Ten Hardy Tall-Growing SHRUBS

50c ea. 3 for \$1.35 5 for \$2.00

These shrubs are all tall or high growing. They grow from 6 to 8 feet tall and are used for tall screens or to enclose yards, and corner planting of foundation. They are all strong 2 year old plants.

ARROWWOOD—A white blooming shrub of upright growth. Attractive foliage which turns all the autumn colors in the fall.

SYRINGA MOCK ORANGE—This is the sweet scented Syringa which blooms white in May. A good screen shrub. We have a limited quantity.

SYRINGA EVERBLOOMING—This is one of the newer Syringas. Semi-double white flowers in May and also blooms throughout the summer.

HONEYSUCKLE—This is a screen shrub, as it makes a heavy thick growth. The blooms are a pinkish red followed by a heavy crop of bright red berries. We have a limited quantity.

CRANBERRY HIGHBUSH—This shrub has heavy large foliage; white flowers in large heads, followed by bright red berries in the fall.

LANTANA—Beautiful wrinkle Lantana like leaves, white flowers in May and June; the berries range in color from crimson to black. Good for shady places.

TAMARIX—This is the tall shrub with feathery foliage and long sprays of pink blooms.

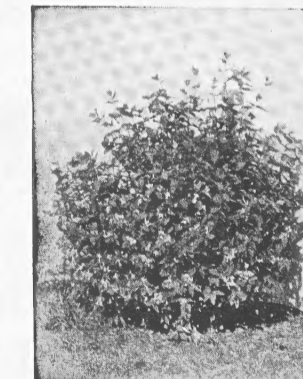
GOLDEN ELDER—Golden yellow foliage. White blooms followed by black berries. A big grower.

SUMAC CUT LEAF—This shrub has long fern-like foliage which turns bright red in the fall. A very attractive shrub.

SNOWBALL—This is an old favorite of the tall growing shrubs; large round white flowers in late May. Grows 6 to 8 feet tall.



Tamarix



Honeysuckle



Cranberry Highbush

Large Size Shrubs for Immediate Effect

We have large size shrubs in the following kinds. These shrubs will give immediate effect. They are fine for tall screens or tall hedges.

4 year, 5 to 6 feet tall, 75c each

Bush Honeysuckle Syringa Mock Orange

Golden Belle Tamarix

Golden Elder H. B. Cranberry

Not Mailable

ALPHA NURSERY

ALPHA, ILLINOIS

Personally Select Your Trees, Evergreens and Plants

ON HIGHWAY U. S. 150

OPEN SUNDAYS

W I R T ' S LAWN SEED



**YOU ARE ALWAYS
WELCOME AT
OUR NURSERY**

We are open Sun-
days for your con-
venience. Hundreds
of people visit our
Nursery during the
growing season and
take their purchases
with them, thus hav-
ing the advantage of
making their own
selections.

Wirt's High Grade Lawn Grass Seed

WIRT'S VELVET LAWN GRASS—This is our own mixture and contains only the top grade seed—Kentucky Blue Grass, Redtop and White Dutch Clover.
50c per lb.; 5 lbs., \$2.25; 10 lbs. or more, 40c per lb.

WIRT'S SHADY LAWN GRASS—This seed is blended especially to build up a lawn where shade is to be considered. This seed is for sowing under trees and shady places where the ordinary seed does not succeed well.
1 lb. pkg., 45c 5 lb. pkg., \$2.00

KENTUCKY BLUE GRASS—Valuable for pepping up old lawns. Choice heavy seed.
1 lb. pkg., 45c 5 lb. pkg., \$2.00

WINNER BRAND LAWN GRASS SEED—This is a good grade of lawn seed, carries a good per cent of blue grass, with red top clover as a nurse crop.
1 lb. pkg., 30c 5 lb. pkg., \$1.40

WIRT'S EXTRA CHOICE LAWN SEED—This is our mixture of Lawn Seed—Kentucky Blue Grass, Redtop, White Dutch Clover, Cheving Foscue and Astoria Bent.
60c per lb.; 5 lbs., \$2.50

ABOUT LAWN GRASS—No one kind of grass will make a lawn that will keep beautifully green throughout the season, but a mixture of several is essential. Our Velvet Lawn mixture is a splendid grass, giving quick and satisfying results. The shady lawn for under trees and shady spots. Our Grass Seed does not contain Timothy, but Fescue, Red Top and Bent. Our seed is fresh 1940 crop.
QUANTITY OF SEED TO USE—1 lb. to 300 square feet of lawn or double this amount if a quick lawn is wanted.

Fertilizers

Wirt's High Grade Fertilizers

The use of Fertilizer will be a very important factor this year, as it is necessary to have properly enriched soil to grow good gardens and fruits. The only Fertilizer for the small grower now available is sheep manure and cattle manure. These two are the old stand-by fertilizers anyway. You better place your order for one or both of these items, while they are available.

CATTLE MANURE (Shredded)—A very efficient high grade natural fertilizer for all general purposes. There is no danger of burning with this fertilizer; easy to handle as grain. 25 lbs. to 10 feet square.
10 lbs., 65c—Postage 18c 25 lbs., \$1.25—Postage 35c
50 lbs., \$2.00—By Express 100 lbs., \$3.00—By Express

VIGORO—The present Governmental orders permit Vigoro to be used only by commercial growers of eatable crops and not to be used on lawns, flowers, shrubs, etc. We suggest that you write us later—there may be changes in regulations. We can give you prices if available.

SHEEP MANURE—Sheep manure is fine for grass, shrubs, trees, vines, vegetables, melons and small fruits. It can be used without fear of weed seed. A top dressing any time in the summer will start new growth in your lawn or plants. Bone Meal mixed with sheep manure is the best combination of fertilizer one can use. Use 60 to 100 pounds sheep manure to 1,000 square feet of surface.
10 lb. bags, 65c—Postage 10c 50 lb. bags, \$2.00—Postage 18c
25 lb. bags, \$1.25—F.O.B. Alpha 100 lb. bags, \$3.00—F.O.B. Alpha

BONE MEAL FERTILIZER—Just the thing for roses, shrubs, etc. No danger of burning the plants. Use 3 to 5 pounds around each shrub or plant when setting it out. For lawns use 50 pounds per 100 square feet.
5 lb. bags, 40c—Postage 10c 10 lb. bags, 75c—Postage 18c

TOBACCO STEMS—We grind up Tobacco Stems and put a small quantity of Tobacco in the ground when planting Melons, Cucumbers, Squash, Asters. This helps very much in controlling the worm that eats the center out of vines of above vegetable plants. This is the only way we know of an effective control, as after the plant is attacked spraying will not help. 10 lb. package \$1.00, prepaid.

Send for our special pamphlets on fertilizers and how to use them. Also on lawn making, they are free for asking.

SPRAY MATERIAL

for Fruit Trees, Roses and Plants

Good Spray material is almost as important as the plants, as many plants will not survive the attacks of insects. Therefore, a good spray is necessary once in a while. The insecticides that I list here I think are the best as to quality and effectiveness.

Kleenup Ready Mix (Oil Emulsion) Dormant Spray

One of the best dormant sprays for scale, Green Aphis and Peach Leaf Roller. Apply in spring just before buds burst. Use 3 to 4 gallons to 100 gallons water.

Price, \$1.00 per Gallon; 5 Gallon Can, \$3.50

10% discount if you bring your own container. Add 15c for postage on a gallon can. The 5 gallon can must go by Express.

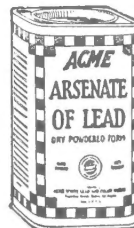
BLACK LEAF 40—For control of Aphis and other eating insects on Roses and tender plants. 1 oz. bottle, 35c. Not mailable.

ARSENATE OF LEAD—For the control of codling moth on Apple and all other tree fruits. Spray when bloom starts to fall and every three weeks thereafter for at least three to four applications. Also for gooseberries, currants, potatoes. Kills all leaf eating insects. Use 4 lbs. to 50 gallons of water.
1 lb. pkg., 35c; 4 lb. pkg., \$1.00. Not mailable.

FISH OIL SOAP—Use for washing shade trees to protect them from bores, wash all round shade trees once every 30 days with a good suds of Fish Oil Soap starting in April. Just the trunk is all that is necessary. Fish oil soap is fine to mix with nicotine for aphid sprays.
1 lb. box, 35c. Mailable. Postage 5c.



LIME SULPHUR—Used for fruit tree scale as a dormant spray, but we prefer the Oil Emulsion. LIME SULPHUR is the best for control of the disease on Raspberries. Spray just when the leaves show in the spring. Use 5 lbs. to 50 gallons water. Also advisable to spray again in September using same amount.
1 lb. can, 35c; 5 lb. can, \$1.50. Not mailable



BORDEAUX MIXTURE—For the control of black spot and yellows on Roses and Cherry trees; also for dry rot on Plums. Use 1 lb. to 5 gal. water.
1 lb. can 30c. Not mailable.

PEAT MOSS

This is the finely ground Peat Moss, for use on Lawns, Evergreens, Shrubs, Roses and Flowers. Keeps the soil loose and holds moisture. Peat Moss worked into the soil under shade trees will help make a nice green lawn, where grass has refused to grow. PEAT MOSS worked into the soil around EVERGREENS will keep them in a good healthy condition. ROSE BEDS need PEAT MOSS.

50 lb. bags, \$2.00; 1 bushel paper bags, 85c; large bales, \$5.00

EXTRA SPECIAL

SUPER SIZE APPLE TREES

5 Years Old—6 to 8 ft.—1 1/4 to 1 3/4 in. Diameter—\$2.50 each

We have a few extra large Apple trees, which should bear in a very few years. Some of these trees had fruit on last year. Here is the quantity and kinds we have: 6 Early Harvest—50 Yellow Delicious—7 Red June—12 Golden Sweet—13 Yellow Transparent—28 Stayman's Winesap—8 Wealthy—7 Northern Spy. When these trees are gone, that is all there is.

5 KINDS OF APPLES ON ONE TREE

SUMMER — FALL — WINTER

2 year—5-6 ft.—\$2.00 each

5 KINDS OF PEACHES ON ONE TREE

EARLY AND LATE

2 yr.—4-6 ft.—\$1.75 each

AUGUST SUPREME CHERRY

NEW LATE SUMMER CHERRY

A delicious sweet cherry in AUGUST when other cherries are gone.

2 yr.—5 to 7 ft. trees—\$2.00 each

NEW PARADISE ASPARAGUS

A new variety of Asparagus. Tremendous grower, yielding 2 to 3 times as much as others; finest flavor, rust proof. 60c for 12; \$1.00 for 25.

VEGETABLE AND GREENHOUSE PLANTS

Send for Our Special List of Vegetable Plants, Hardy Outdoor Flowers and Greenhouse Plants

Address Card to ALPHA GREENHOUSE, ALPHA, ILL.

PLANTING AND INSTRUCTION SHEETS FREE

Drop us a card or letter. We will send the sheets that interest you.
STRAWBERRIES AND RASPBERRIES—Planting and Spraying.
FRUIT TREES—Spraying guide.
ROSES—Planting, care and spraying.
SHADE TREES—Planting and care.
EVERGREENS—Planting and care.
LAWNS AND FERTILIZERS.

Open Sundays

This is a cordial invitation to visit our nursery . . .

Plan a trip to our nursery. You'll see much to interest you and perhaps you will find a suggestion as to just the very things you need to make your grounds more beautiful and fruitful.

SELECT PERSONALLY SHRUBS, TREES AND PLANTS

Hundreds of our customers come to the Nursery every year, select their SHRUBS and PLANTS, and take them home in their cars.

It will save you money to do this, also you see just what you are getting.

We Can Ship Anywhere!

TRANSPORTATION

We can ship our Nursery Stock anywhere you wish, by Express, Freight or Parcel Post. Also by Truck lines. Our prices listed are for the stock boxed or wrapped. Large fruit trees, shade trees, evergreens and shrubs must go by express or freight. Berry plants, roses and small quantity of shrubs can go by parcel post.

ALPHA NURSERY STOCK

Is grown on heavy, rich black loam, which insures good, strong, steady growth. Our aim is to grow the very best, most hardy and productive varieties adapted for the Northern central states.

We have been in the nursery business at Alpha, Illinois, for the past 50 years, and have a host of satisfied customers, as we try our best to treat every one fairly and squarely.

We try to serve every customer and planter of our goods so promptly, courteously, and thoroughly as to assure each the profit, pleasure and satisfaction he expects.

We Guarantee

our stock to be true to name. Should any items prove untrue, we will replace them.

But shall not at any time be held responsible for any amount greater than the original price.

We Replace

stock that dies at one-half price, if a list is sent us within four months after the shipment is made.

ALPHA NURSERY

Personally Select Your Trees, Evergreens and Plants

ON HIGHWAY U. S. 150

ALPHA, ILLINOIS

OPEN SUNDAYS

Special Bargains for Thrifty Buyers

10 Fruit Trees

3 to 4 ft.—2 Years

\$3.00

Postage 30c

- 1 Jonathan
- 1 Yellow Transparent
- 1 Grimes Golden
- 1 Yellow Delicious
- 1 Red Delicious
- 1 Duchess 1 Apricot
- 2 Peaches 1 Chinese Elm

These are all good, strong, healthy trees. The varieties are best suited for our climate.

Evergreens

10 Trees \$2.00

4 and 5 Years
12 to 18 In.

These Evergreens have been transplanted, have good roots and well balanced tops. They cannot be compared with seedlings so often offered in collections. These trees are the same that we plant in our fields to grow into large trees.

This Collection Contains

FIRS SPRUCE
PINE JUNIPERS



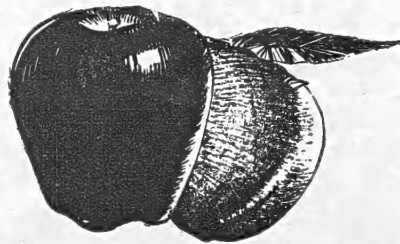
Spruce

50 Choice GLADIOLUS BULBS **\$1.00**
Assorted Colors

5 CHOICE DAHLIAS **\$1.00**
Large Flowering—5 Colors

15 CHOICE CANNAS **\$1.00**
Red—Yellow—Apricot

5 Kinds of Apples
on one tree



SUMMER — FALL — WINTER
RED APPLES & YELLOW APPLES
ALL GOOD VARIETIES
2 Yr. Trees—5 to 6 ft.—\$2.00 each

5 Kinds of Peaches
on one tree

EARLY AND LATE KINDS — JULY TO SEPTEMBER

2 Year Trees — 4-6 ft. — \$1.75 each

For those who are limited for room and want something different, here is just the thing. Buy two trees and have 5 kinds of APPLES and 5 kinds of PEACHES. The best part is that you will have fresh fruit from July until frost.

Vegetables for the HOME GARDEN HI VITAMIN

\$2.50 Postpaid

We Offer this Big Super Garden Seed Collection at a Real Bargain

The varieties are the best and choicest and are best adapted to this location. Many of these varieties are not found in general seed racks.

This collection contains sufficient seed to plant a good size farm or city garden.

- 1/4 lb. Giant Stringless Green Pod Beans
- 1/4 lb. Rust Proof Golden Wax Beans
- 1/2 lb. Fordhook Bush Lima Beans
- 1/4 lb. Hybrid Golden Bantam Corn
- 1/4 lb. Hybrid Stowell's Evergreen Corn
- 1/4 lb. Alaska Wilt Resistant Early Peas
- 1/2 lb. Mammoth Pod Midget Later Peas
- 1/4 lb. Thomas Laxton Freezing Peas
- 1 pkt. Ea. Dawn Blood Red Beets
- 1 pkt. Ea. Coreless Carrot
- 1 pkt. Ea. Wonder Giant Cucumber
- 1 pkt. Snow's Ea. Pickling Cucumber
- 1 pkt. Black Seeded Leaf Lettuce
- 1 pkt. Iceberg Head Lettuce
- 1 pkt. Ea. Red Bird Radish
- 1 pkt. White Icicle Radish
- 1 pkt. White Crown Parsnip
- 1 pkt. First-of-All Tomato
- 1 pkt. Peerless Canning Tomato
- 1 pkt. Bloomsdale Savoy Leaf Spinach
- 1 pkt. Golden Table Baking Squash
- 1 pkt. Wisconsin All Season Cabbage
- 1 pkt. New Dry Weather Cauliflower
- 1 pkt. Mammoth Long Pod Okra
- 1 pkt. Giant Yellow Sweede Rutabaga

25 SELECTED VARIETIES CHOICE GARDEN SEED

A \$3.50 Value . . . \$2.50
Postpaid

Better Order Early — Seeds Are Scarce

ALPHA NURSERY

Alpha, Illinois

NOW IS THE TIME

1943

This Spring is the time to plant Berry Plants, Fruit Trees, Gardens, Roses, and Evergreens. Small fruit planted this Spring will bear next year. This is your only chance to have your own fruit next year.

The shortage of fruit will continue for several years. You can help this shortage by planting a part of your garden or back yard to fruit. The quicker you get the trees and plants in the ground, the quicker they will produce.

Planting time is short—Just three months: March, April, May. Get your orders in early, as the supply of Nursery goods is not large.

THIS IS THE 52nd YEAR OF THE ALPHA NURSERY. We have grown millions of trees and plants during this time and have gained much actual experience as to the GROWING, CARE AND HABITS OF EVERGREENS, TREES, ROSES and PLANTS suitable to our climate.

This long experience gives assurance of better trees and plants, as most all our stock is grown in our fields here at ALPHA, ILLINOIS.

This nursery is now in the hands of the second and third generations of WIRTS growing quality nursery stock.

Fair dealings, and honest values have built a reputation for this firm which stands the acid test of time.

ALPHA NURSERY

Alpha, Illinois



EVERYDAY

you are judged by the
outward appearance of
your HOME